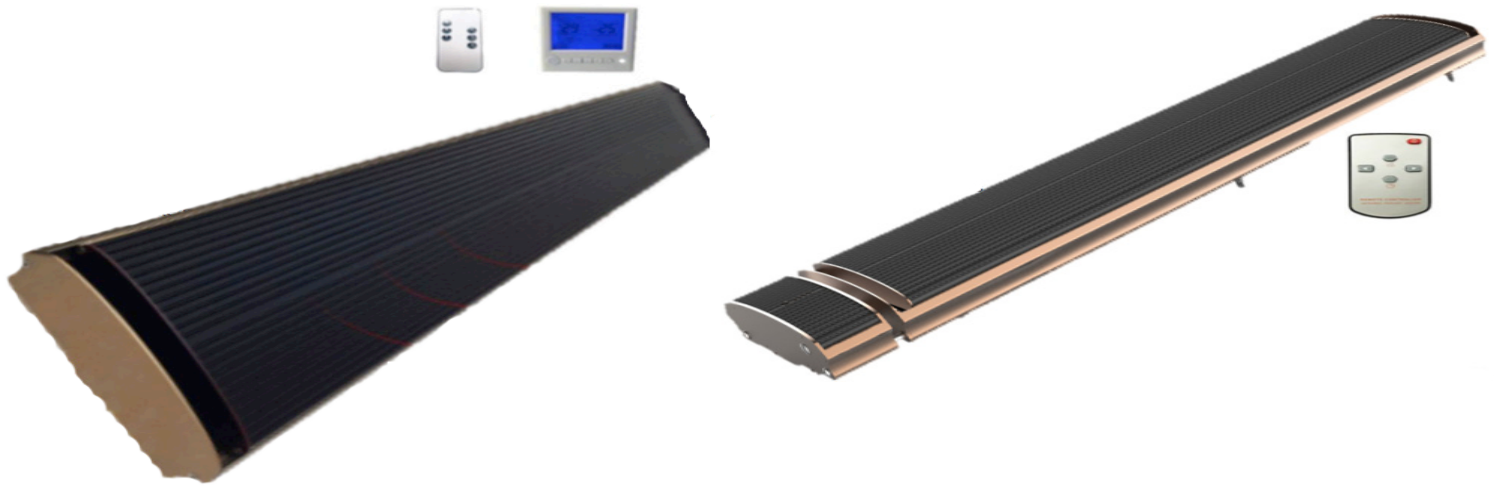


POWER HEATERS



WALL MOUNTED THERMOSTATS

INCLUDES REMOTE CONTROL

	1 KW	1.8 KW	2.4 KW	3.2 KW
Dimension (A)	600x189x67	1000x189x67	1500x189x67	2000x189x67
Dimensions (B)	695x189x67	1095x189x67	1595x189x67	2095x189x67
Voltage	220V - 240V	220V - 240V	220V - 240V	220V - 240V
Wattage	1000W +/- 5%	1800W +/- 5%	2400W +/- 5%	3200W +/- 5%
Net Weight (A)	4.8Kilos	7.4Kilos	10.6Kilos	13.6Kilos
Net Weight (B)	5.4Kilos	8.0Kilos	11.2Kilos	14.2Kilos
Energy Transfer	98%	98%	98%	98%
Overheat Protection	230°C	230°C	230°C	230°C
Heating Coverage	10 m2	20 m2	30 m2	40 m2
Surface Design	Sealed Aluminium Black Powder Coated	Sealed Aluminium Black Powder Coated	Sealed Aluminium Black Powder Coated	Sealed Aluminium Black Powder Coated
Heating Element	Infrared Quatrz Tube	Infrared Quatrz Tube	Infrared Quatrz Tube	Infrared Quatrz Tube
Material	Nano Technology Quatrz Infrard Tubes	Nano Technology Quatrz Infrard Tubesn	Nano Technology Quatrz Infrard Tubes	Nano Technology Quatrz Infrard Tubes
Construction	Black Powder Coated Alumimium Casting With Chrome Plated Bracketts	Black Powder Coated Alumimium Casting With Chrome Plated Bracketts	Black Powder Coated Alumimium Casting With Chrome Plated Bracketts	Black Powder Coated Alumimium Casting With Chrome Plated Bracketts
Fixings	Wall Mounted and Hard Wired	Wall Mounted and Hard Wired	Wall Mounted and Hard Wired	Wall Mounted and Hard Wired
Connection	UK/EU/US Plug with 3meter cable	UK/EU/US Plug with 3meter cable	UK/EU/US Plug with 3meter cable	UK/EU/US Plug with 3meter cable
Surface Temperature	380°C	380°C	380°C	380°C
Service Life	300 Hours	300 Hours	300 Hours	300 Hours
Warrantly	2 years	2 years	2 years	2 years
Country of Manufacturer	Made in China	Made in China	Made in China	Made in China

