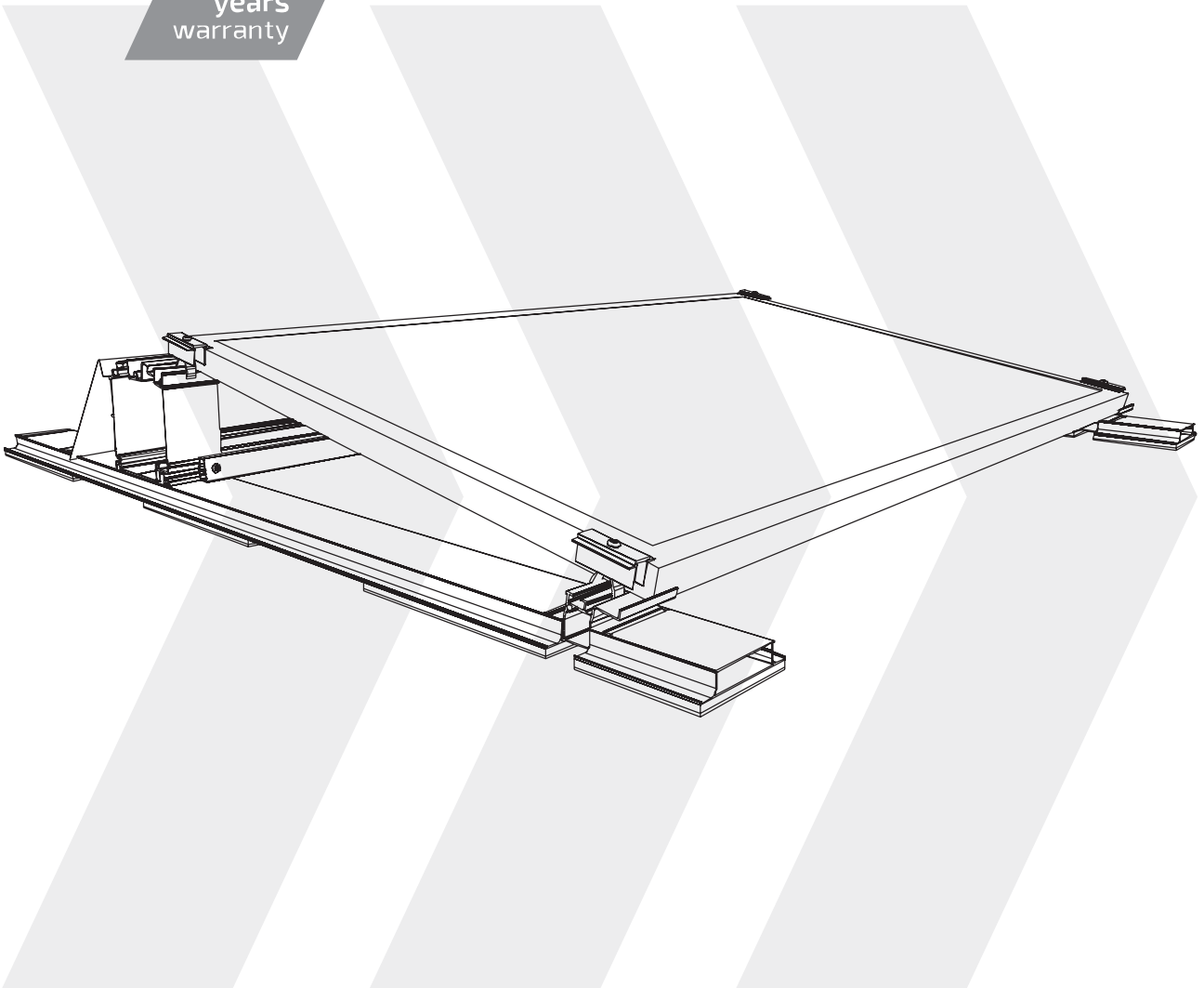


TRITEC



PREMIUM
MOUNTING
TECHNOLOGIES

10
years
warranty



PRODUCT DATA SHEET
PMT EVOLUTION SOUTH 10°/15°

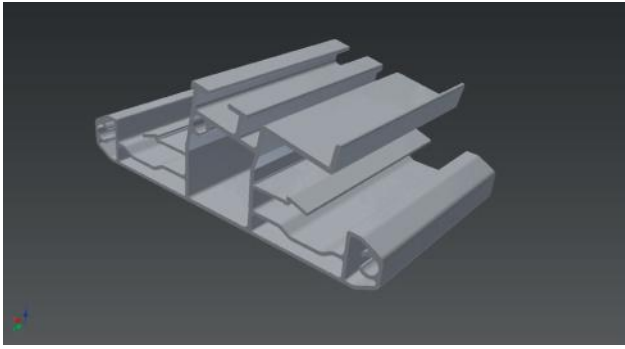
PMT EVOLUTION SOUTH

THE UNCOMPROMISING FLAT ROOF ASSEMBLY SYSTEM FOR PHOTOVOLTAIC LARGE PLANTS.

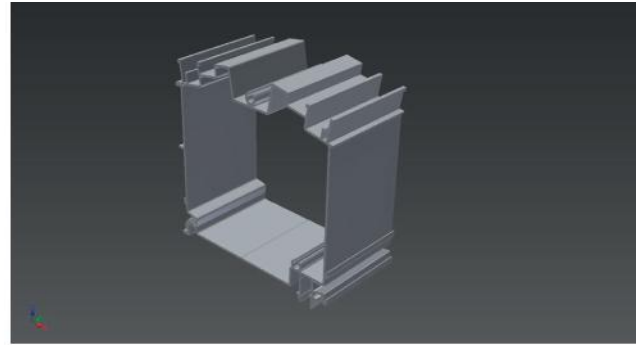
Unmatched building security-related records are achieved through an intelligent change of the entire construction and this results in security of investment as well as increase in efficiency thanks to fastest assembly time. Just at the beginning of the assembly process, it becomes visible what innovative click-technology can do. Short click component parts do not only facilitate the handling during assembly, but also specify the required dimension for positioning the single components. This is why no time-consuming measuring within the system is required and errors during assembly are avoided as click-connections are well-matched. No sharp small parts such as drill screws are used during the entire assembly process. Owing to this drill-free assembly, there are also no sharp drilling chips which might damage the delicate roof membrane. The load-transferring integrated network consisting of extra wide supporting areas for bottoms tracks, the Cube and the Base is reinforced with multifunctional cross-bracing for maximizing the system stability. This extremely stable assembly system forms the optimal basis for profit-yielding PV operation with regard to maximum overall economy consisting of system acquisition costs, mounting time and building security.

SIMPLY THE BEST

- › Shortest mounting time
- › Very low number of component parts
- › Roof connection without roof penetration
- › Optimum load distribution and load application through a basic construction on the roof membranefeaturing supporting areas with a width of 150 mm
- › Convenient component parts for an easy and safe handling during assembly
- › Sandwich structure preservation mat (11 mm) for the protection of the roof membrane and against plasticizer migration fix pre-assembled on the system
- › Unhindered roof drainage according to DIN 1986-100 through partially applied structure preservation mat featuring a height of 11 mm
- › Cable routings and cable coverings are included in the system price
- › Cable installation is also possible after system installation without additional expenditure
- › Optimum ventilation for maximum energy output
- › No load transmission via the PV module lengthways or crosswise
- › Ballast reduction through aerodynamic optimized construction and implementation of the latest research results from system and ballasting software
- › Tested in boundary layer wind tunnel by the independent Institut for Industrial Aerodynamics - according to German and US standards (ASCE 7-05, ASCE 7-10 and SEAOC PV 2-2012-compliant)
- › Dispatch-optimized construction of all component parts (1020 kWp/40 t truck)













Detail view – Base



Detail view – Cube

TECHNICAL SPECIFICATIONS

	Type of application	Flat roofs of up to 5° degrees (<i>special projects possible</i>)
	Attack Angle	10° and 15°
	Orientation	South
	Roof Covering	Foil, bitumen, gravel, greening, sheet, concrete, open spaces
	Standard offset parameter	1500 mm (10°) and 1650 mm (15°) from module front edge to module front edge (<i>special projects possible</i>)
	Material	Exclusively premium-quality aluminium EN-AW-6063-T3 and high-grade steel A2-70 No galvanized component parts and plastic material are used
	Lightweight System	Low area load of only 4.25 kg/m² (10°) and 4.50 kg/m² (15°) (<i>Arrangement: see technical drawing</i>)
	Structure Preservation Mat	A 11 mm thick sandwich structure for maximum protection against plasticizer migration and roof membrane damage is already preassembled to the system.
	Minimum Arrangement	2 rows with 3 modules or 3 rows with 2 modules
	PV Module Suitability	All usual PV module sizes (<i>special sizes upon request</i>) Width: 980-1020 mm Length: 1630-1680 mm Height: 30-50 mm

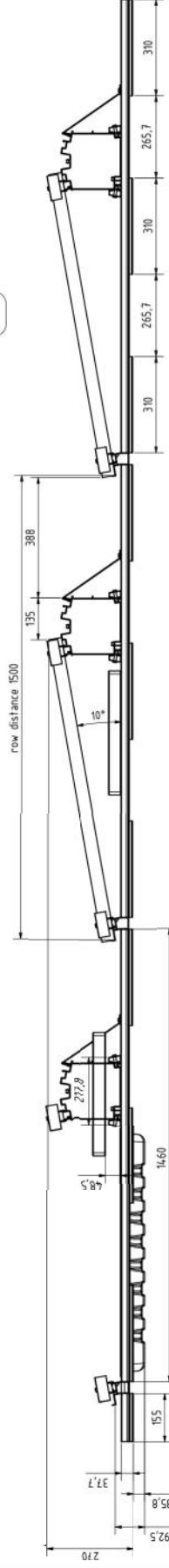
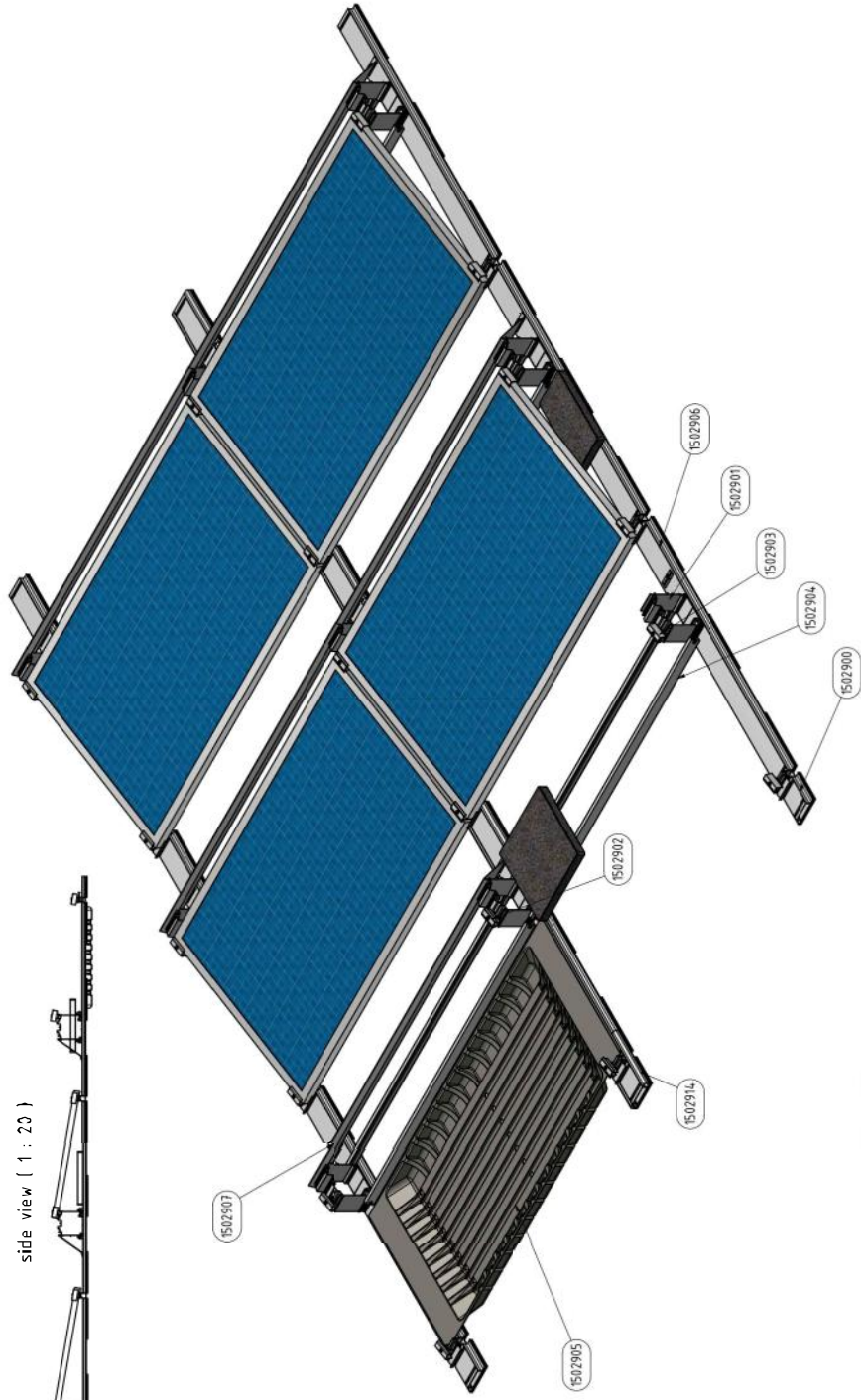
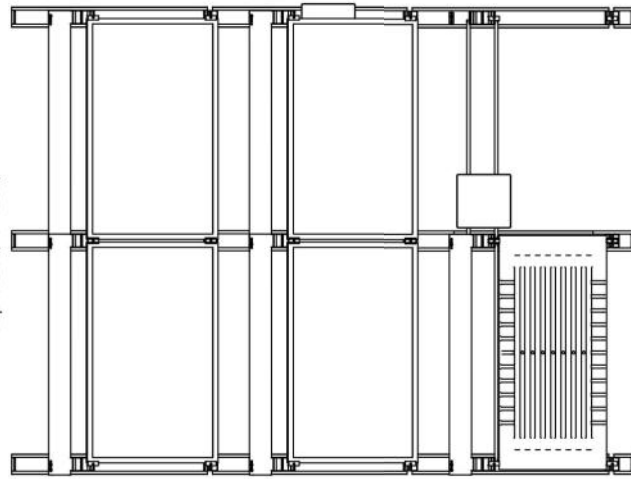
front view (1 : 20)



side view (1 : 20)



top view (1 : 20)

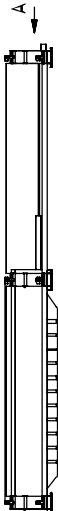


ART. NO. TRITEC	DESIGNATION	DESCRIPTION	COMPONENT (LxWxH)	CUSTOM TARIFF NO.
1502900	EVO AEVIBP Typ 155	start, end and connecting profile Typ 1 inclusive 1/2 protection mat	155x150x37,7	76042100
1502901	EVO C10 Typ 96	Cube 10° Grad	190x96x205	76042100
1502902	EVO HK Typ 80	middle clamp 30-50mm; L=80mm	80x45x70	76099900
1502903	EVO EK Typ 80	end clamp 30-50mm; L=80mm	80x35x70	76099900
1502904	EVO OBS Typ 1636	cross and ballast tie inclusive 2 screws DIN T380 AZ 70 M6x35	1636x25x39	76042100
1502905	EVO BW Typ 70	ballast tray Typ 70 inclusive 2 protection strips and 6 screws	175x2800x76	39259080
1502906	EVO HBP Typ 1460	main ground profile inclusive 3 protection mats and one Base 10°	1560x150x37,7/69	76042100
1502907	EVO RW10	back plate 10°	1800x240x30	76099900
1502914	EVO KD15 Typ 530	cable duct cover length 530	25x25x530	76042100
1502915	EVO OBSV Typ 400	cross tie connector	412x17x34,5	76042100
1502916	EVO OBSVU Typ 1200	cross tie connector universal	1180x17x34,5	76042100
	EVO AU Universal	setting jig between the rails	1400x30x20	76042100
	EVO BS Typ1	ballast stone 400x400x40	400x400x40	68101900
	EVO BS Typ2	ballast stone 400x200x40	400x200x40	68101900
	PV-Modul	framed PV-module	L=1630-1860 B=980-1020 H=30-50	

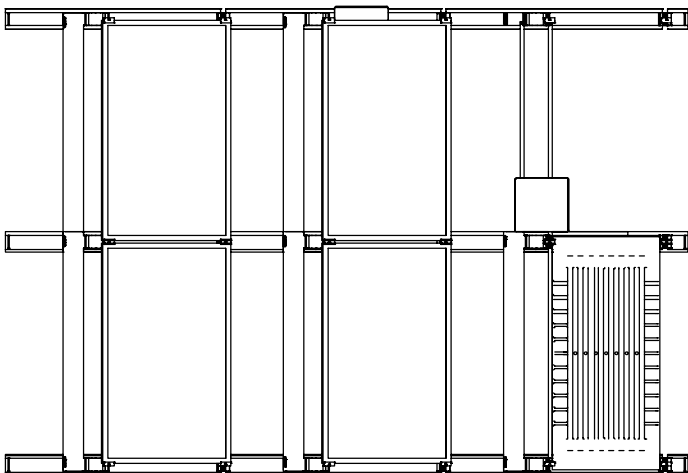
TRITEC PMT

52215-1921-0	
PMT Evolution South 10°	
PMT Evolution S 10	
1	
AT	

front view (1 : 20)



top view (1 : 20)



side view (1 : 20)



PV-module

5215-9

5225-8

5225-22

5225-10

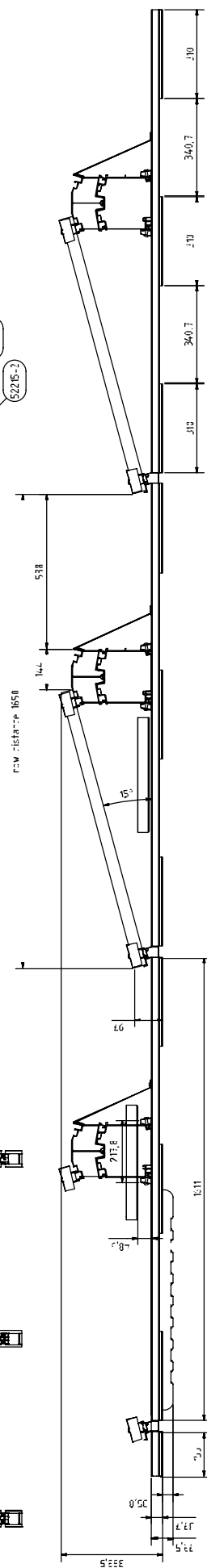
5225-3

5775-70

5225-1

5775-15

5225-11



PMT Evolution South 15°

ART. NO.	DESCRIPTION	COMPONENT (L.A.S.A.F.)	CUSTOMER CASE NO.
5225-2	5 and end cover of profile 1 pul. / 2	B541510177	7604200
5225-5	middle - 60mm x 30mm, 1.5mm	B541510177	7615000
5225-7	end cover of profile 1 pul. / 2	B685311	7615000
5225-8	cross slip connector	B685315	7604200
5225-9	balaust pan 70 incl. 2 protect on rail and 5	7128007E	3525980
5225-15	Cuba 15° - 3mm - attachment, pre-assembled	150955684	7604200
5225-20	main 5 pul. profile 1 pul. 3 pul. action rails and one	151151437732	7604200
5775-1	bracket - 15° - 1 pul. 2 screws M8x15	40069851	7615000
5225-22	cover - 150 x 30	25425530	7604200
5225-25	EVU A - universal	16103030	7604200
5225-30	EVU GSW - 1 pul. 412	71012143	7604200
5775-5	EVU 2511	760794363	7604200
PV-Module	Panel PV-Modul	6351570 B 970-1013	
		F-30-50	

FIT	
IND. N.	IND. S.
IND. M.	IND. L.
IND. P.	IND. R.
IND. Q.	IND. T.
IND. U.	IND. V.
IND. W.	IND. X.
IND. Y.	IND. Z.
PMT	
52215-1921-1	
PMT Evolution South 15°	
PMT Evolution S 15	
1	



TRITEC Energy Ltd.
Unit 18, The Vinery Industrial Estate
A27 - Arundel Road, Arundel, West Sussex
BN18 9PY, United Kingdom

Comp No. 06554649
VAT No. 191270416

Tel +44 (0) 1903 881 800
E-Mail: svn.huesing@tritec-energy.com WEB: www.tritec-energy.com

HOCHSCHULE COBURG
university of applied sciences



INGENIEURGRUPPE
KNÖRNSCHILD & KOLLEGEN

Further information: www.pmt.solutions
Subject to technical changes.
2014© Premium Mounting Technologies GmbH & Co. KG

SERVICE HOTLINE
+44 (0)1903 881800