

# Product Information - Standard Panels

## Quality & safety

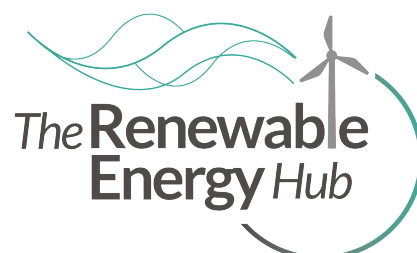
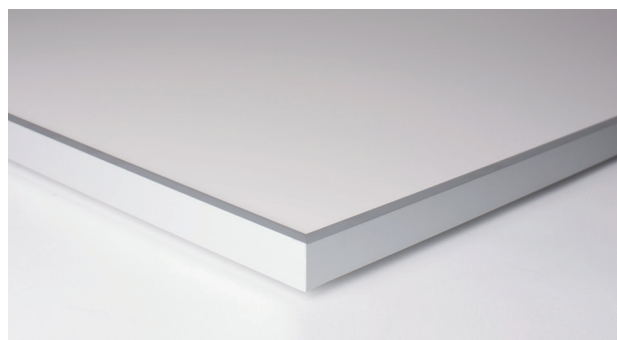
- TUV GS certification by TUV Rheinland Germany
- CE certification by TUV Rheinland Germany
- 5 integrated temperature sensors provide safety from overheating
- 2000V proved (Hipot test)

## Technical details

HEATING ELEMENT	Carbon nickel with nano silver technology
FRONT	White powder coated metallic surface
BACK	Aluminum sheet with profiles for mounting
CABLE	3m power cable (UK plug type)
FRAME	Adonised aluminium frame
VOLTAGE	230V, 50Hz
PROTECTION	IP44

Model name	Size LxWxD (cm)	Power (W)
Rotkraft 300 RW	30 x 90 x 2.5	300
Rotkraft 400 RW	60 x 60 x 2.5	400
Rotkraft 400 RWP	30 x 120 x 2.5	400
Rotkraft 600 RW	60 x 90 x 2.5	600
Rotkraft 800 RW	60 x 120 x 2.5	800
Rotkraft 1000 RW*	60 x 120 x 2.5	1000

\*Recommended as a ceiling-mounted device



All information is subject to change.

[info@renewableenergyhub.co.uk](mailto:info@renewableenergyhub.co.uk)  
[www.renewableenergyhub.co.uk](http://www.renewableenergyhub.co.uk)

**ROTKRAFT**<sup>®</sup>  
 INFRARED HEATING